



**Shenzhen ShinTech Engineering Co., Ltd.**

[www.pcbshintech.com](http://www.pcbshintech.com)

# Contents



**Introduction**

**Develop Strategy**

**Products & Management**

**The Staff**

**Certifications**

# About Us

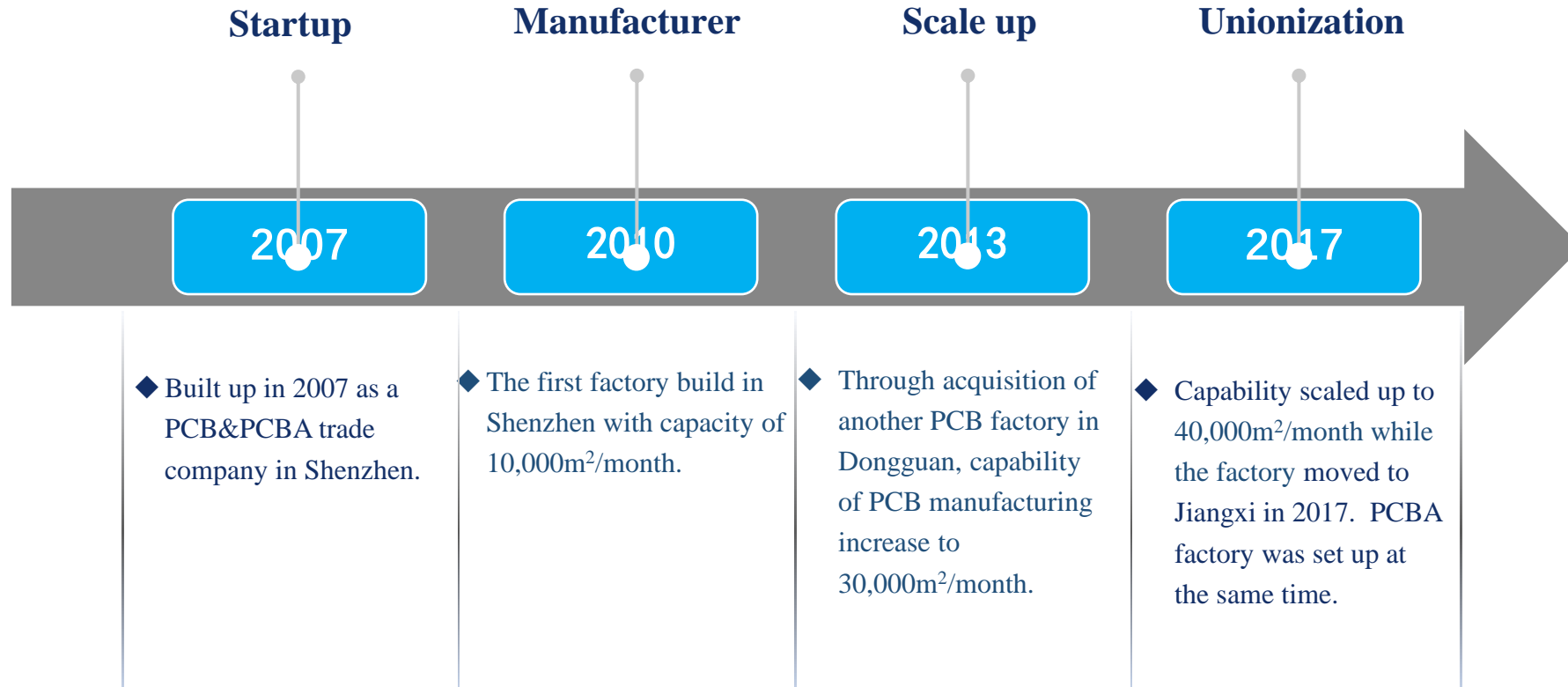
- **Shenzhen ShinTech Engineering Co., Ltd.** specialized in manufacturing of PCB, PCBA, FPC, etc. applying to communication, industrial control, medical, auto electronics, medical instruments, etc., with reliable quality and capable of OEM, ODM, one-stop shopping and turn-key services.
- ShinTech was established in 2007 and has developed into a manufacturer with 500+ workers, 58 engineers, and 41 quality control engineers over 13 years. Shin Tech's monthly capability is 40,000 m<sup>2</sup> per month for PCB and with 15 product lines for PCBA.
- ShinTech developed a management system basing target, under the strategy policy "Quality is life", with accumulated advantages to meet customer different requirements in quality, lead-time, price, technology capability and service, etc.





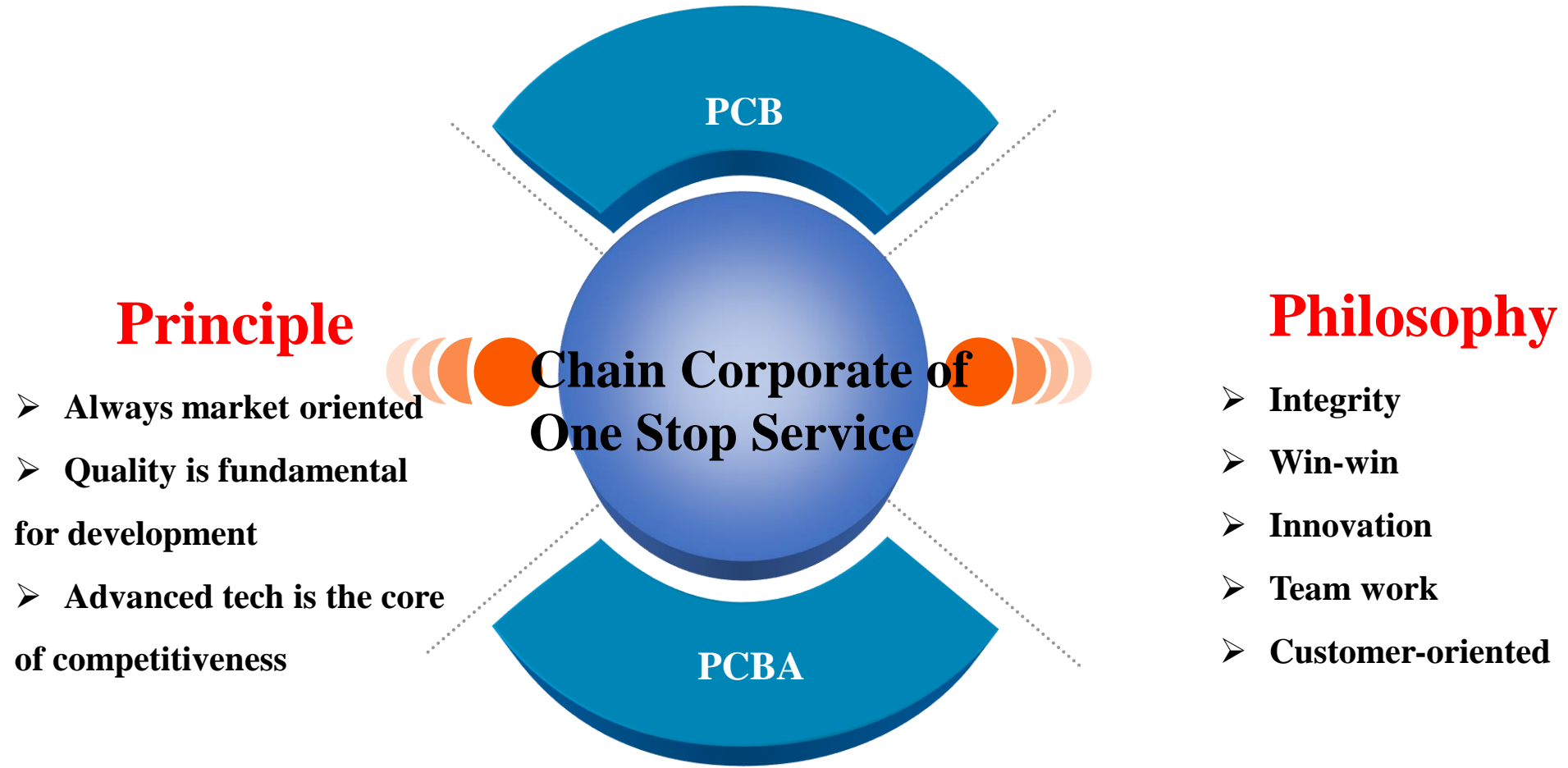


# History



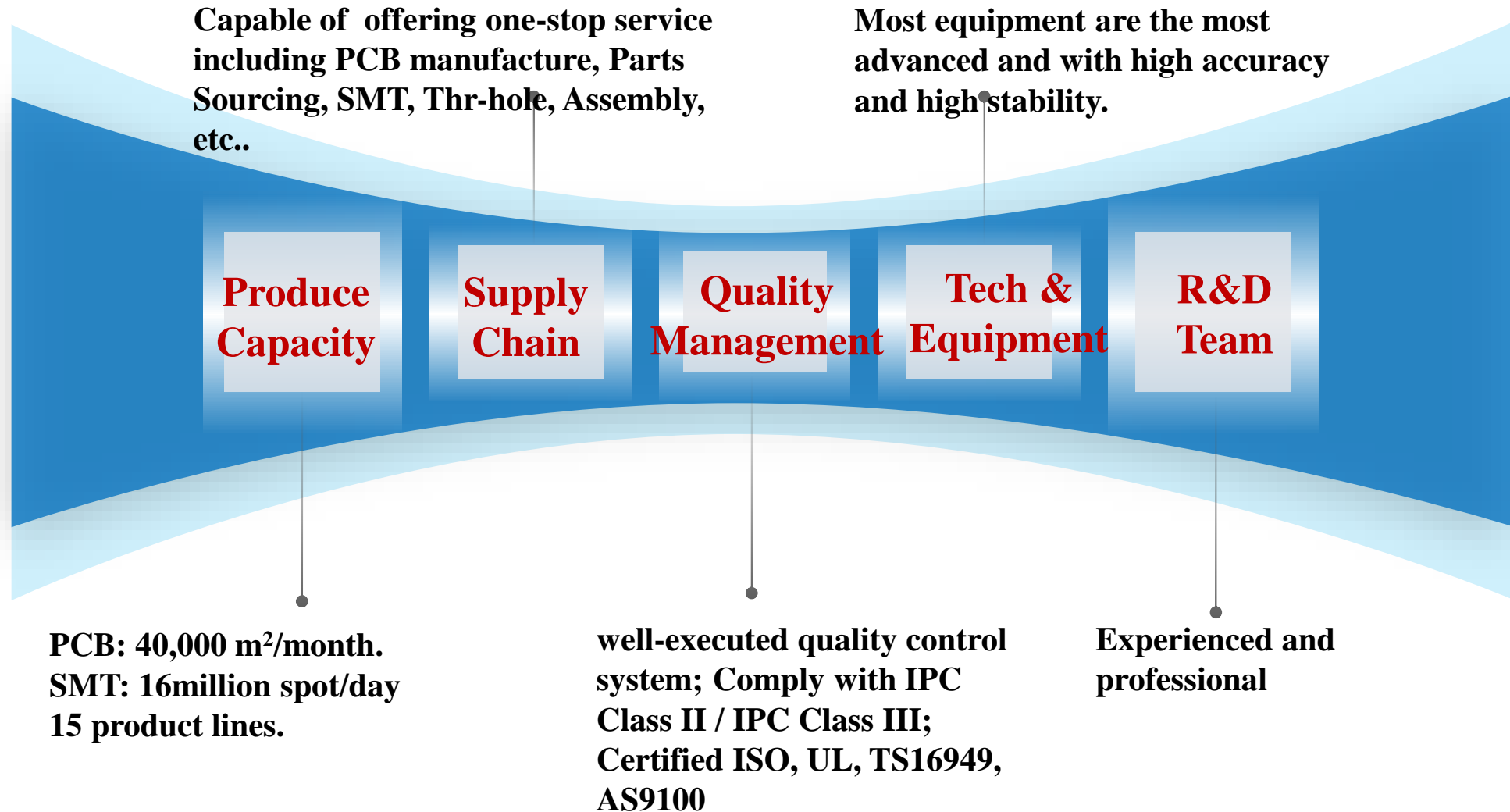


# Our Vision



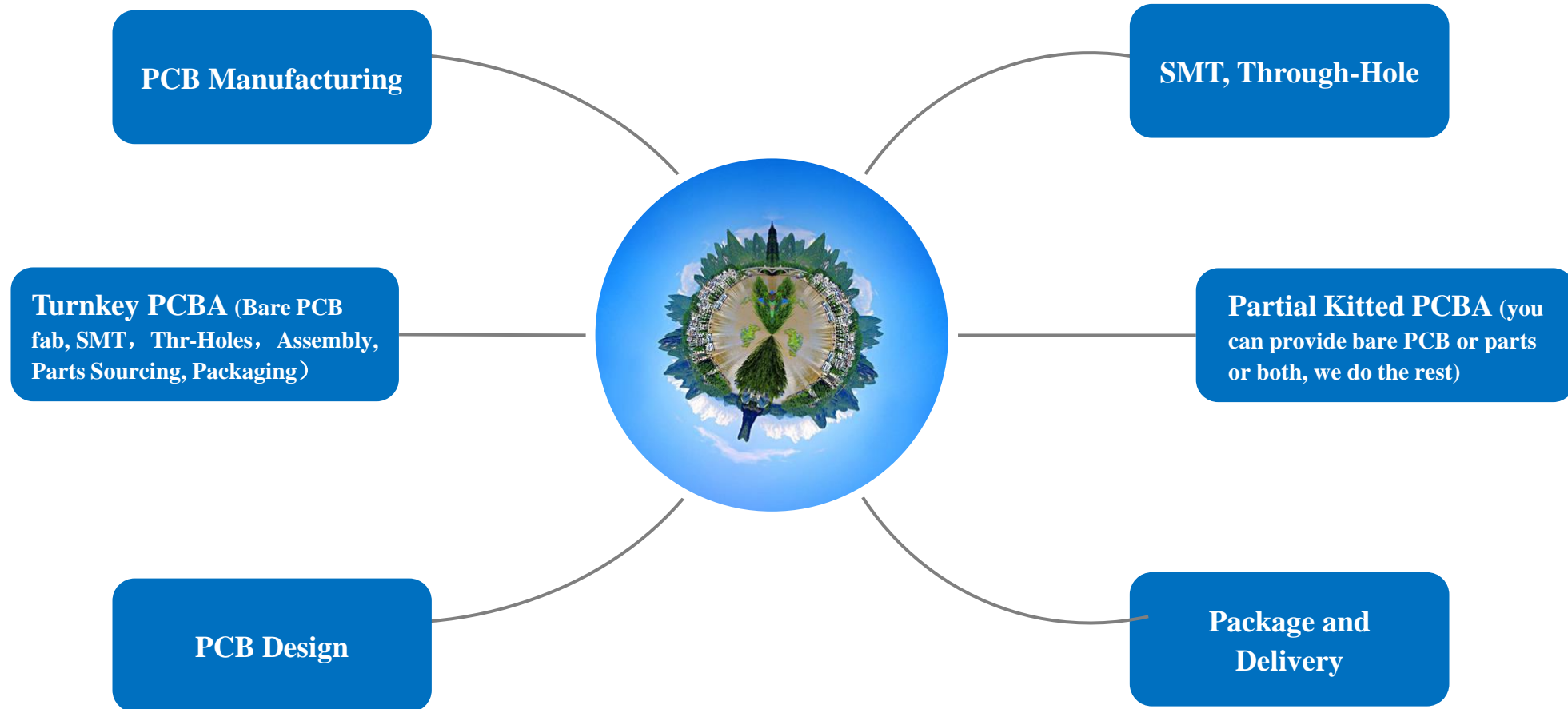


# Competitiveness

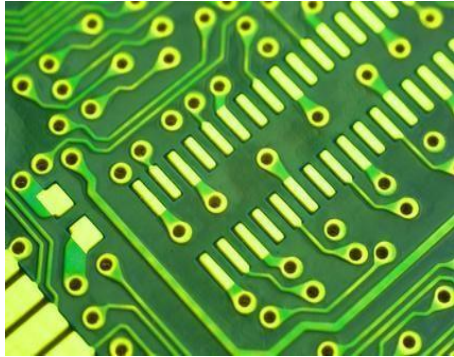




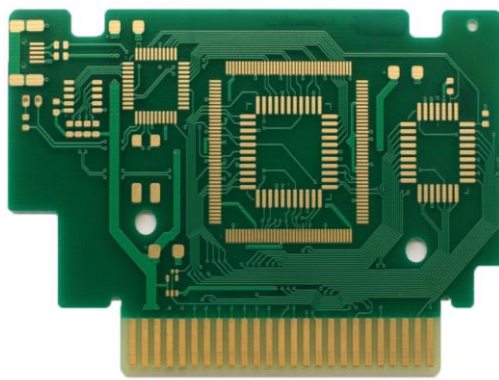
# Services



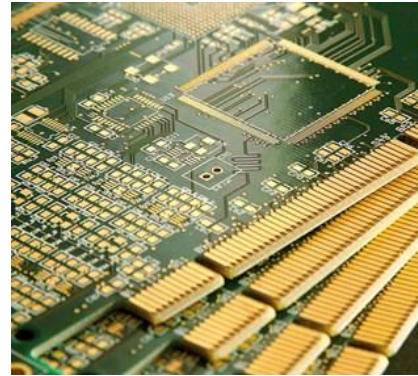
# PCB Products Display



**Single-sided**



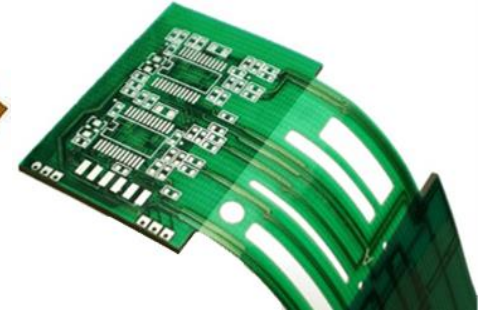
**Double-sided**



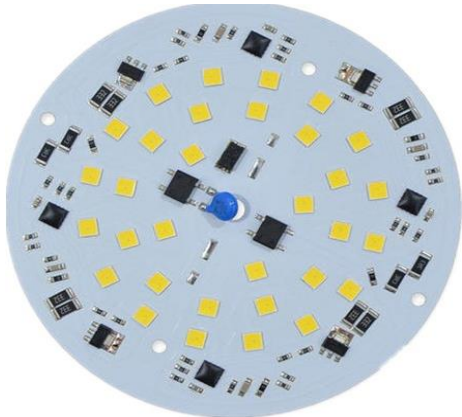
**Multilayer**



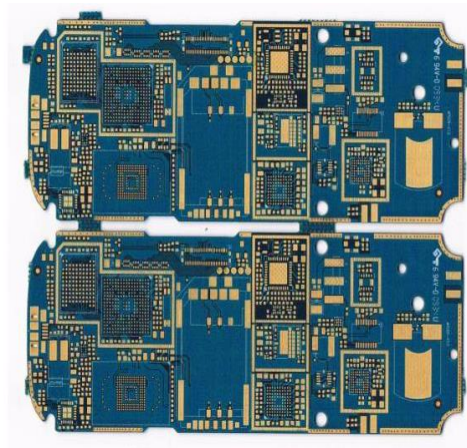
**Flexible**



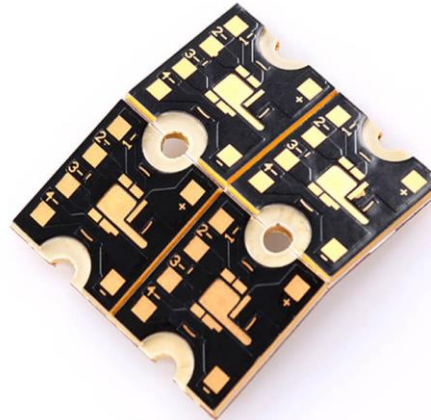
**Rigid-flexible**



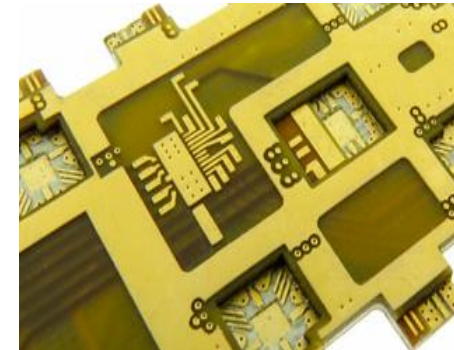
**Aluminum**



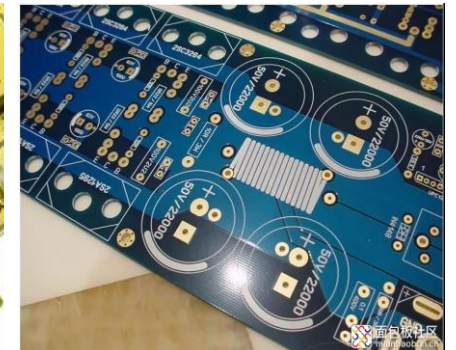
**HDI**



**Heavy copper**



**High frequency**

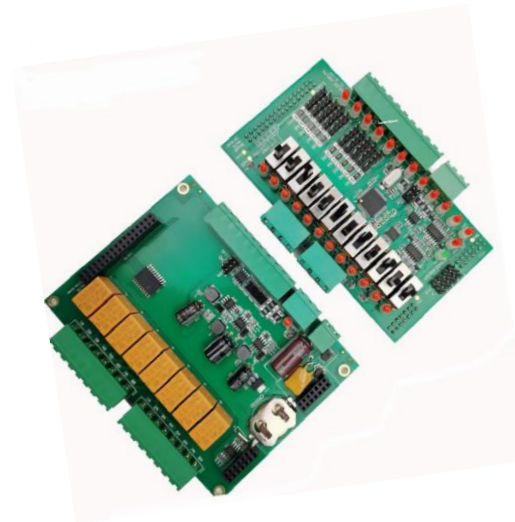
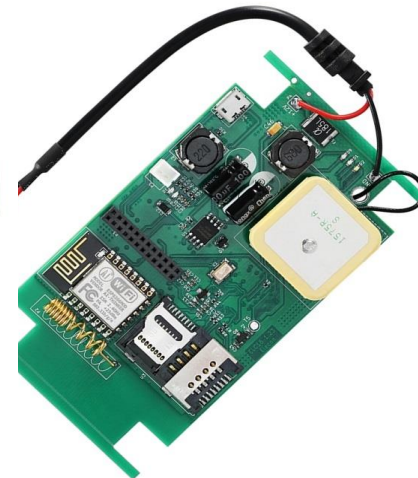
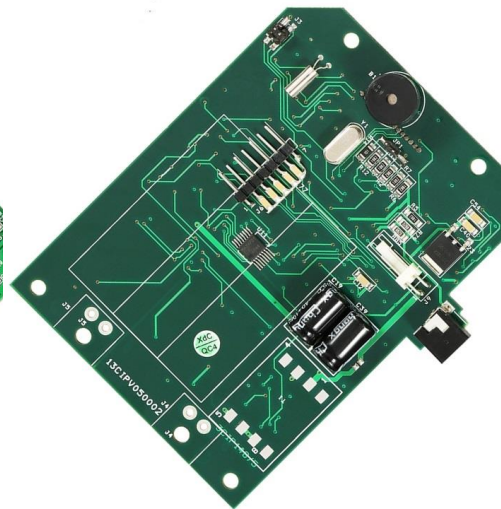
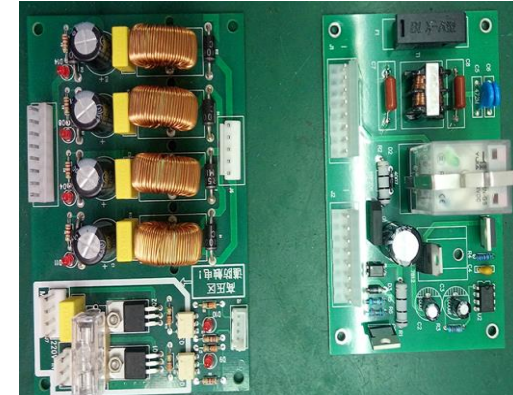
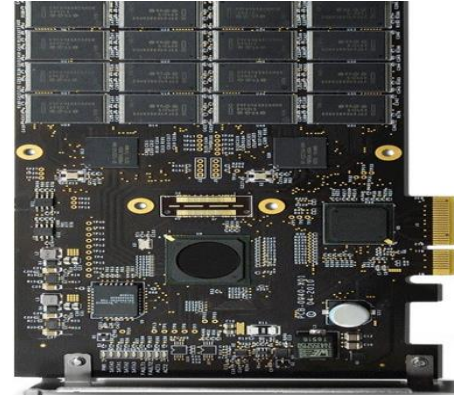
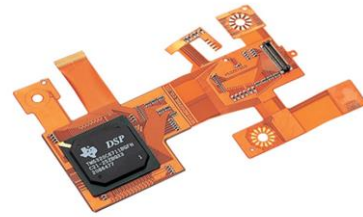
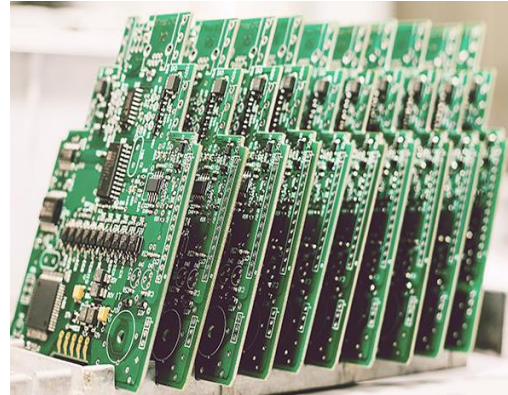


**Immersion gold**





# PCBA Products Display





PCB Process Capability	
Manufacture Capacity	1-40,000 m²
Layer	1,2,4,6, up to 50 layers
Material	FR-4 (Normal to high Tg), High CTI FR-4, CEM-1, CEM-2, Polyimide (PI), Aluminium Base, Rogers, Rohs Compliant, Glass Epoxy, Isola, etc.
PCB type	Rigid, Flexible, Rigid-Flexible
Shape	Any Shape: Rectangular, Round, Slots, Cutouts, Complex, Irregular
Min. Core Thickness	4mil/0.1mm （2-12 layer） , 2mil/0.06mm (≥13layer)
Prepreg Type	1080, 2116, 765-8, 106, 3313, 2165, 1500
Max Board Size	24.14"*47.24 " /620mm*1200mm
Board Thickness	0.2mm/8mil-6.0mm/236mil
Thickness Tolerance	±0.1mm (Board Thickness<1.0mm); ±10% (Board Thickness≥1.0mm)
Copper Thickness	0.5-20 oz
Copper Thickness Tolerance	±0.25 oz
Min. Line Width/Space	3mil
Min. Drill Hole Diameter	4mil/0.1mm, 10mil
PTH Wall Thickness	≥20μm
Max. Aspect Ratio	12:1
Min. Blind/Burried Via	4mil/0.1mm
Surface Finish	HASL, OSP, Nickle, Immersion Gold, Imm Tin, Imm Silver, etc.
Solder Mask	Green, Red, White, Yellow, Blue, Black, Orange, Purple, etc.
Silkscreen Color	Green, Blue, Black, White, Red, Purple, Transparent, Grey, Yellow, Orange, etc.
Silkscreen Min. Line Width	0.006" or 0.15mm
Impedance Control	±10% (Standard), ±7(Advanced)
Hole Location Tolerance	±0.05mm, ±0.13mm (2 <sup>nd</sup> drilled hole to 1 <sup>st</sup> hole location)
Min. Trace/Gap	0.075mm/3mil
PCB Cutting	Shear, V-Score, Tab-routed

# Main Equipment

Board Cut



Edger and Washing



6# Drilling



2# Drilling



Drilling  
Deflection



Deblurring



Heavy Copper  
Line



Electroplating  
Line





Light Copper  
Line



Acid  
Etching Line



Alkaline  
Etching Line



Out Layer  
Prepare Line



Immersion  
Gold



HASL



OSP



Surface Finish  
Washing





Combination



Press Machine



Puncher



# Quality Control Equipment

Flying Probe Test



Target Drilling Machine



Straightener



All in one test



AOI



Repair Machine





# Reliable Test



Metallurgic  
microscope

microscope

Impedance  
Instrument



UV  
Analyzer

Automatic  
Titrator



# PCBA Process Capability

Services	Full turnkey services (Bare PCB board manufacturing, Components sourcing, SMT, Thro-holes, Assembly, Package), partial kitted services
Lead Time	Prototye: 1-7work days. Mass Order: 7-28 work days
Testing on Products	Testing Jig/Mold, X-ray Inspection, AOI Test, Functional Test
Quantity	MOQ: 1 pc. Prototype, small order, mass order
Files Needed	PCB: Gerber files (CAM, PCB, PCBDOC) Components: Bill of Materials (BOM List) Assembly: Pick-N-Place file
PCB Panel Size	Min. Size: 0.25*0.25 inch (6*6mm) Max Size: 48*24 inch(1200*600mm)
Components Details	Passive Down to 01005 size BGA and Ultra-Fine (uBGA) Leadless Chip Carriers/CSP Double-sided SMT Assembly Fine Pitch to 0.02mm/0.8 mils BGA Repair and Reball Part Removal and Replacement
Component package	Cut Tape, Tube, Reels, Loose Parts
PCB Specifications	Rigid, Metal Core, Flexible, Flex-Rigid



Automatic PCB Loading



Automatic Printing



SMT



Wave Soldering



After Soldering



Assembly



Reflow Soldering



AOI Test



Chip Inserting



QC Inspecting



Packaging & Delivering

- ❑ 15 lines (10 SMD lines, 3 through-hole LINES, 2 for Final Assembly).
- ❑ High Speed JUKI SMT Machines, with precision of 0.05mm.
- ❑ Automatic solder paste printing with precision of 0.025mm.
- ❑ Automatic AOI inspection.
- ❑ Excellent welding technology.
- ❑ Professional team with many years experience.

# The Staff





# Certifications



Received in Sep.2019



Received in Nov.2019



Received in Sep.2020



Received in Dec.2020



Received in Feb.2019



# Our Customers





# Looking forward to cooperate with you!

- [www.pcbshintech.com](http://www.pcbshintech.com)
- Phone: +86-(0)755-29499981
- E-mails: [sales@pcbshintech.com](mailto:sales@pcbshintech.com)
- Whatsapp: 86-13430714229
- Wechat: 86-13430714229

